

**Prairie Point Metropolitan District No. 3**  
**8390 E. Crescent Parkway, Suite 300**  
**Greenwood Village, Colorado 80111**  
**Office: 303.779.4525 Fax: 303.773.2050**

December 11, 2023

Division of Local Government  
1313 Sherman Street, Room 521  
Denver, CO 80203  
[Via E-File Portal](#)

Office of the Arapahoe County Clerk &  
Recorder  
Administration Office  
5334 S. Prince Street  
Littleton, CO 80120 [clerk@arapahoegov.com](mailto:clerk@arapahoegov.com)

Office of the Arapahoe County Assessor  
Administration Office  
5334 S. Prince Street Littleton, CO 80120  
[assessor@arapahoegov.com](mailto:assessor@arapahoegov.com)

Re: Prairie Point Metropolitan District No. 3 – Map Filing

Dear Filing Administrator:

Colorado Revised Statute §32-1-306 requires special districts to provide a current, and accurate map of its boundaries to the Division of Local Government, County Assessor and Clerk and Recorder on or before January 1, of each year. In 2023 the District above has had no boundary adjustments, inclusions, or exclusions.

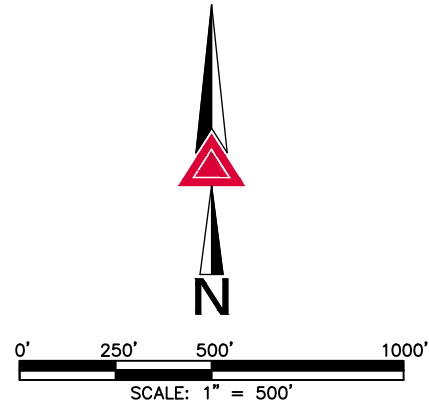
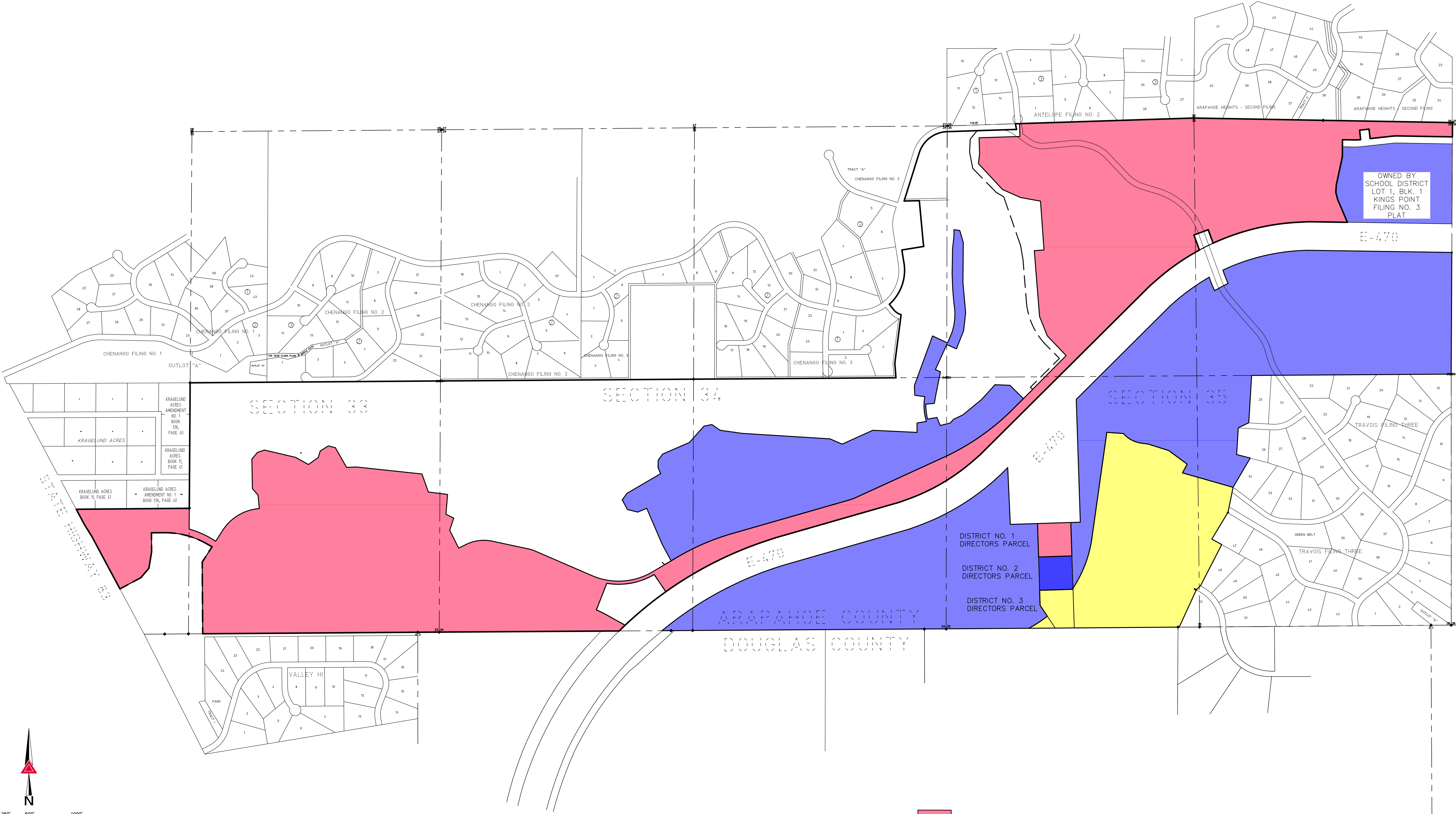
Please use the current map on file for any boundary questions. Should you have further questions or need additional information, please contact the undersigned.

Sincerely,

*Natalie Herschberger*

Natalie Herschberger  
District Administrator

# PRAIRIE POINT METROPOLITAN DISTRICTS 1, 2 & 3 BOUNDARY MAP



- DISTRICT NO. 1
- DISTRICT NO. 2
- DISTRICT NO. 3

Q:\171721-01 - KINGS POINT SURVEY TASKS\DWG\DISTRICT EXHIBITS\DISTRICT 1 2 3 MAP-INTERIM.DWG

<b>AZTEC</b> CONSULTANTS, INC. <small>AzTec Proj. No.: 171721-01</small>	300 East Mineral Ave., Suite 1 Littleton, Colorado 80122 Phone: (303) 713-1898 Fax: (303) 713-1897 <a href="http://www.aztecconsultants.com">www.aztecconsultants.com</a>	<b>PRAIRIE POINT</b> METRO DISTRICT MAPPING 2023 UPDATE	DATE OF PREPARATION: 12/13/2023 SCALE: 1"=500' SHEET 1 OF 1
	Q:\171721-01 - KINGS POINT SURVEY TASKS\DWG\DISTRICT EXHIBITS\DISTRICT 1 2 3 MAP-INTERIM.DWG		